

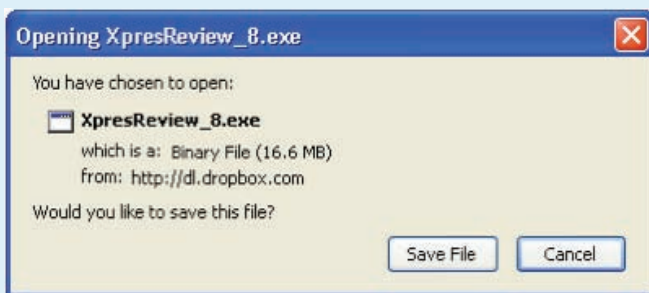
Getting Started With XPresReview

Step One : Downloading & Installing The XPresReview Software

Cagenix utilizes a software package called XpresReview for our design approval process.

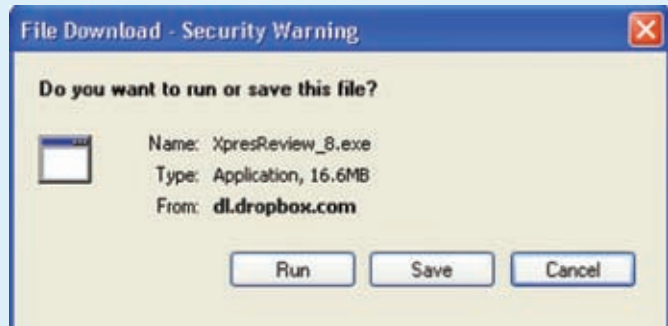
DOWNLOAD LINK : <http://xpresreview.cagenix.com>

Clicking the download link should prompt your web browser to download the XpresReview_8.exe installation file. If you are prompted to choose the directory to save the file, choose one you have easy access to, such as your desktop. If the browser automatically saves the file it will likely be in the 'Downloads' folder of 'My Documents.'



Sample Firefox Download Box

Choosing 'Save File' will save the XpresReview_8.exe to the 'Downloads' folder in 'My Documents' by default.



Sample Internet Explorer Download Box

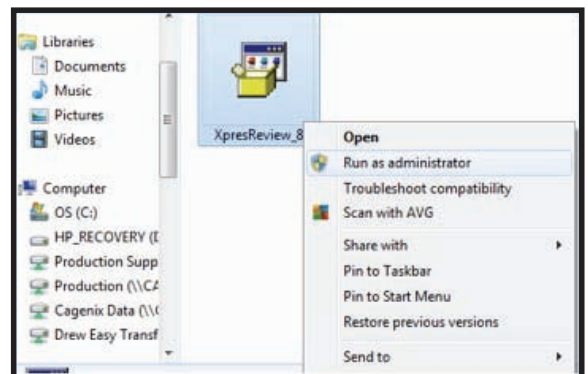
Choosing 'Save' will allow you to save the XpresReview_8.exe to the folder of your choice. Choosing 'Run' will download the file and begin the installation without saving it to a specific folder.

Step Two : Running The Software Once Installed

Once the software is downloaded, you can install it by double-clicking the XpresReview_8.exe icon.

Special Note To Windows 7/8 Users:

You will need to install XpresReview as an administrator to avoid any conflicts. Once you have located the downloaded 'XpresReview_8.exe' file, right-click and choose 'Run as Administrator' from the context menu. If this is not chosen, XpresReview will likely not install correctly.



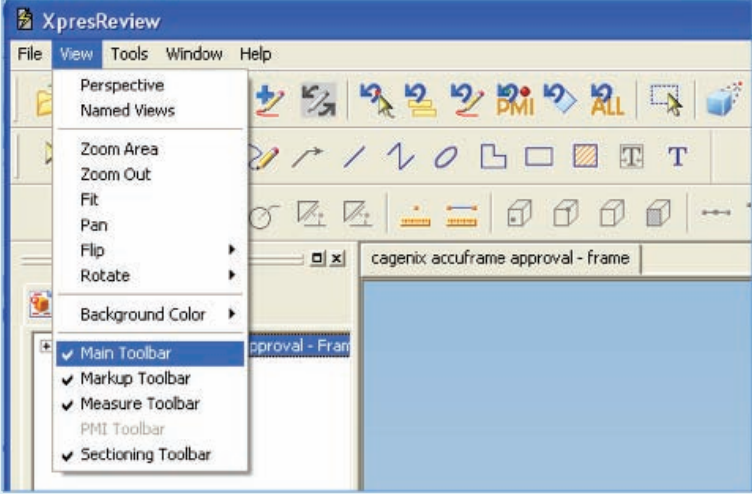
Using XPresReview Software

Step Three: Opening a Cagenix .pcf file

Once installed, you can start the program in multiple ways. Either by locating the application on your computer, finding it in the Programs section of your start tab or double clicking the *.pcf file sent to you for review.

The *.pcf file is the file that is sent by Cagenix that includes the specific design of your case that requires review. In the name of that file is the Cagenix Order Number, the patient's name and whether it is a maxillary or mandibular arch.

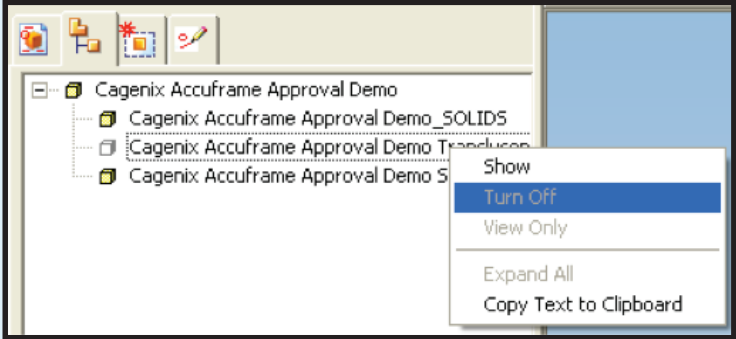
Once the XpresReview application is open, make sure that all of the toolbars are visible.



Click on the 'Views' tab and make sure that the 'Main Toolbar', 'Markup Toolbar', 'Measure Toolbar', and 'Sectioning Toolbar' all have checks next to them. If they do not have the check marks, click them to activate the toolbars in the user interface.

These toolbars will allow you to rotate, view in cross-sections, and take measurements of files that we send you in the design approval process.

The 'Assembly Pathfinder' tab in the EdgeBar allows you to turn off sections of the order to get unobstructed views. Orders will generally include three parts: (1) the frame (SOLIDS); (2) the stone cast model (Stone Cast); (3) a translucent version of the tooth setup (Translucent).



SHOW
Turns the section of the order on, making it viewable (only available for sections already turned off).





TURN OFF
Removes this section of the order from view (only available for sections already turned on).

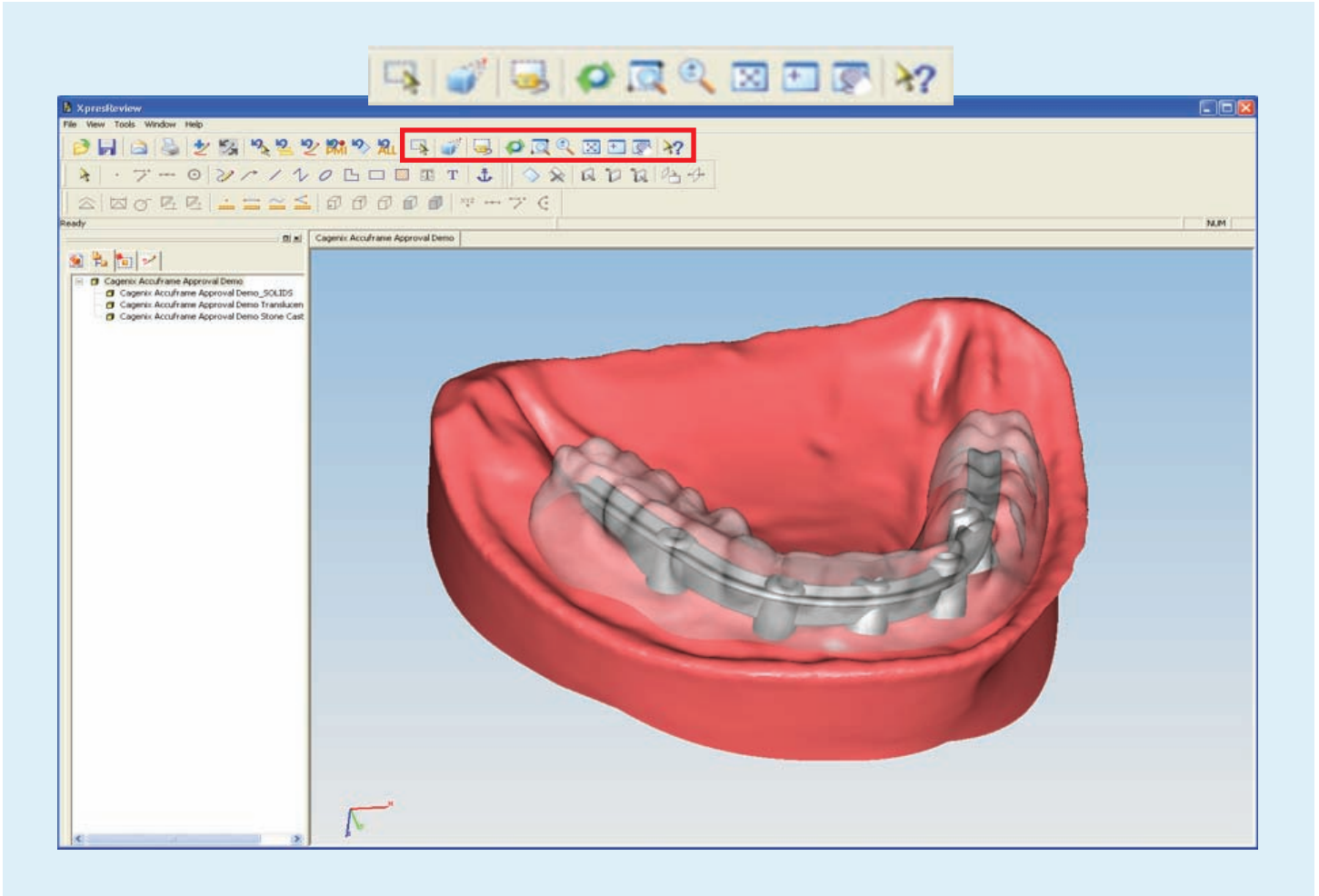
VIEW ONLY
Makes section viewable but not selectable for measuring.

Using XPresReview Software

Step Four: Exploring The Toolbars

The 'Main Toolbar' allows for manipulation of the order in view. You can rotate the order in three dimensions, zoom in on specific areas, translate the order, etc.

- | | | | |
|--|---|---|--|
|  | ROTATE
Allows 3d rotation of image |  | FIT
Fits the model within the current view |
|  | ZOOM AREA
Zooms in on specified area (click and drag to highlight area) |  | PAN
Translates the order up, down, left, and right on the screen |



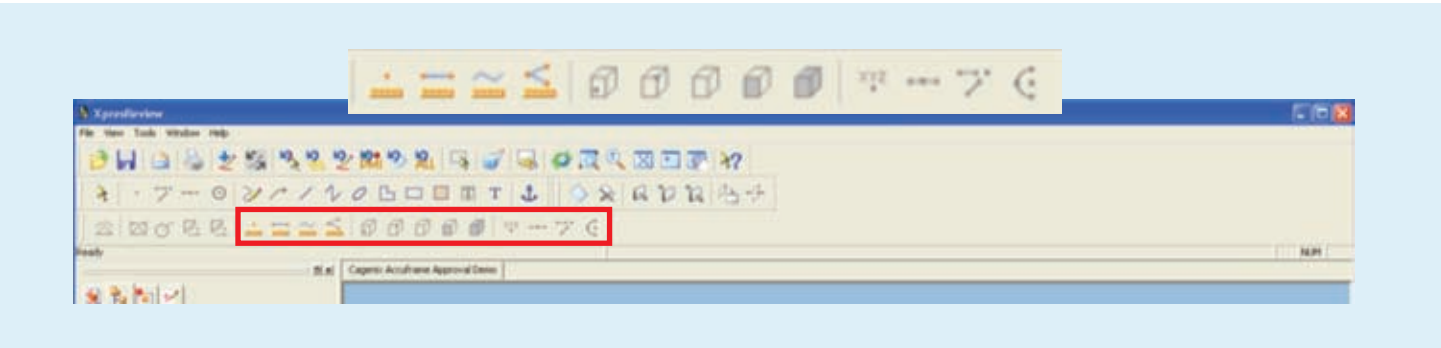
After you have selected the Rotate tool (see above), you can rotate the image by simply grabbing it and moving the mouse to rotate the image. You can also rotate the image horizontally by clicking your mouse on the right side of the window and moving the cursor up and down. You can rotate the image vertically by doing the same at the bottom of the window.

Using XPresReview Software

Step Four: Exploring The Toolbars

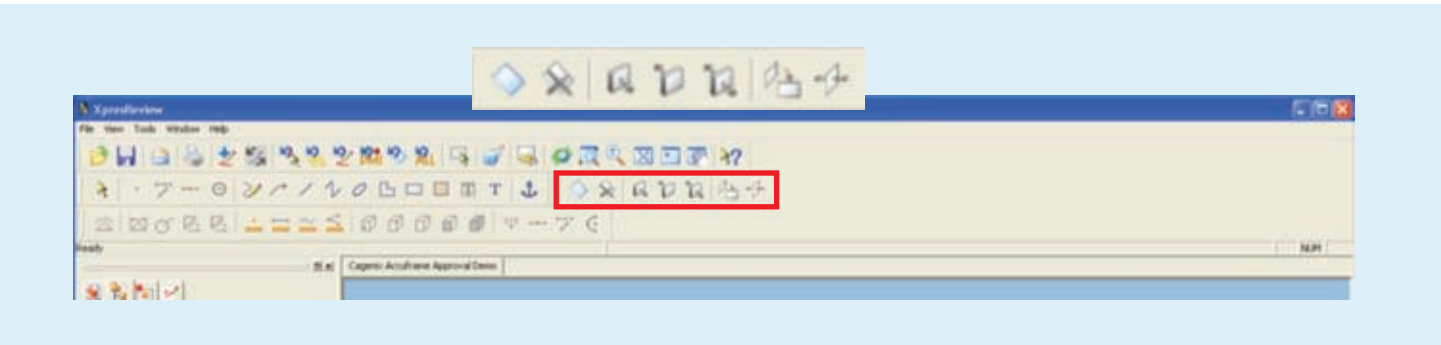
The 'Measurement Toolbar' allows for taking measurements between two points in the image. This is most commonly used to determine the distance from a point on the bar to the soft tissue surface or the surface of the wax up.

- 
DOUBLE
 Takes measurement between two surfaces, edges, etc.
- 
POINT
 Limits selection to two points (most commonly used)

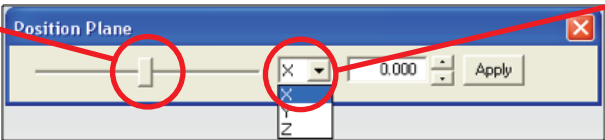


The 'Sectioning Toolbar' allows you to make cross-sections anywhere along the three principal axes. These cross-sectioned views will give you very accurate information regarding the frame's position relative to soft tissue and wax-up models. Combined with the 'Measurement Toolbar', sectioned views will ensure you know exactly how much space is available.

- 
POSITION PLANE
 Toggles the 'Position Plane' toolbar (below)



DRAG BAR
 Allows re-positioning of cross-section plane by holding left-mouse button and dragging the bar left or right



AXIS DROP DOWN MENU
 Choose which axes to create the cross-section plane along (X, Y, or Z)

Using XPresReview Software

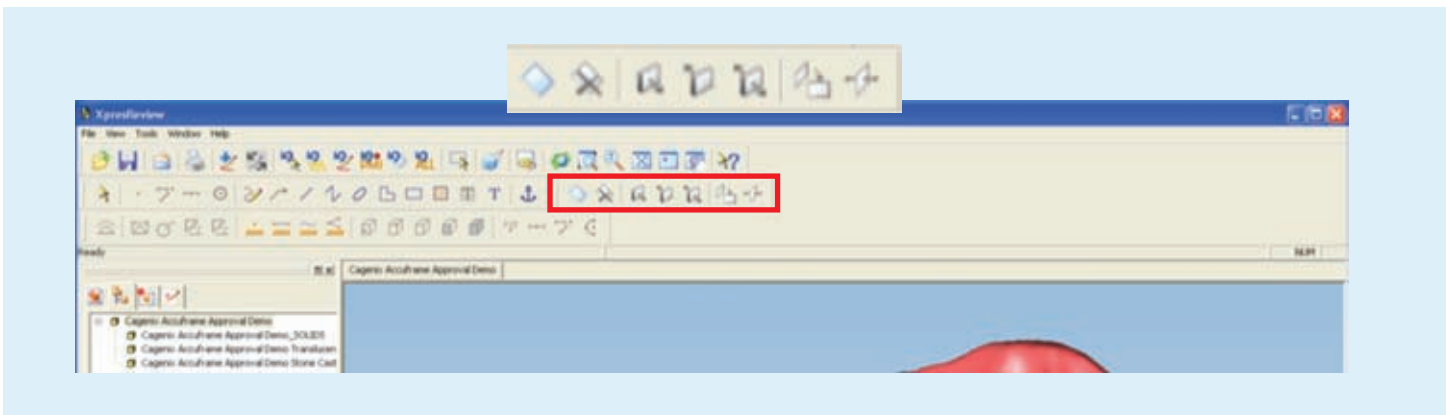
Step Four: Exploring The Toolbars

CREATE SECTION
Creates section and opens the "Position Plane" toolbar (below)

CLIP NEAR
Cuts away the image near the screen

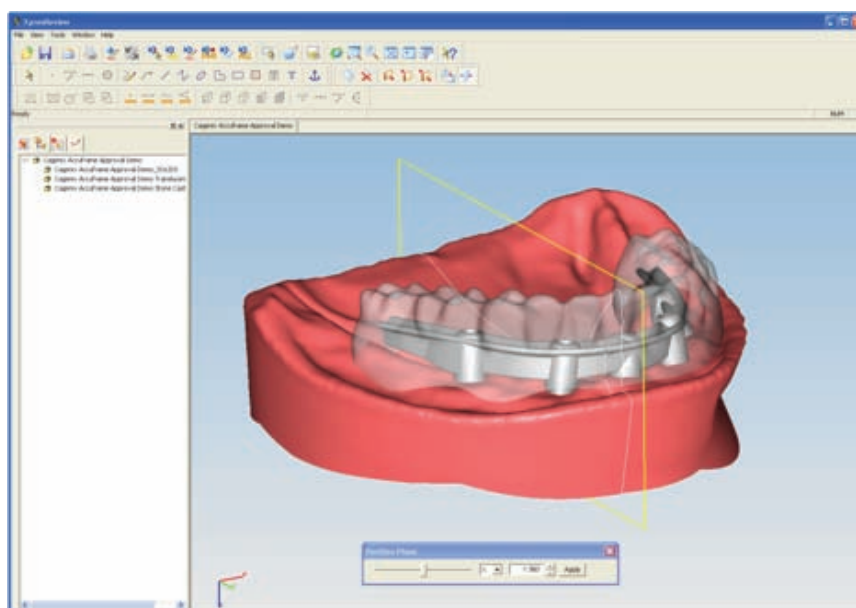
DELETE SECTION
Turns the current section view off and closes the 'Position Plane' toolbar

PLANE VIEW
Orients the screen view to the cross-section plane



POSITION PLANE TOOLBAR

Once you click on the 'Create Section' button, the 'Position Plane' toolbar will come up. In the example below, the plane is oriented along the X-axis.

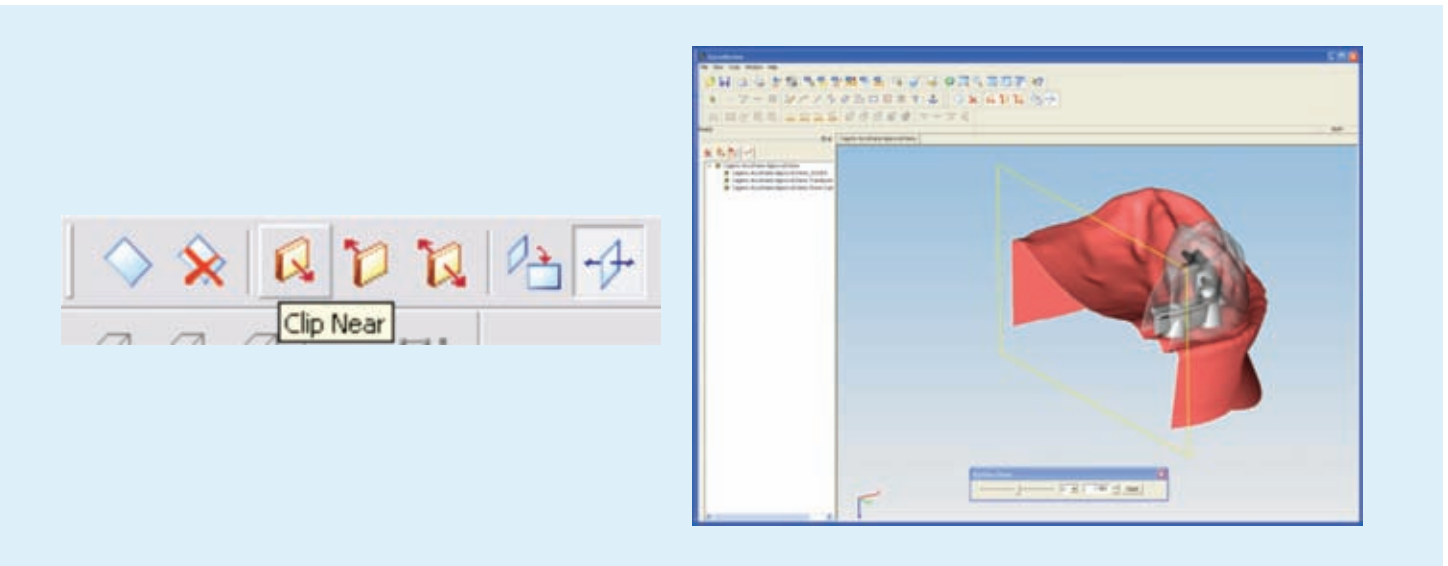


Using XPresReview Software

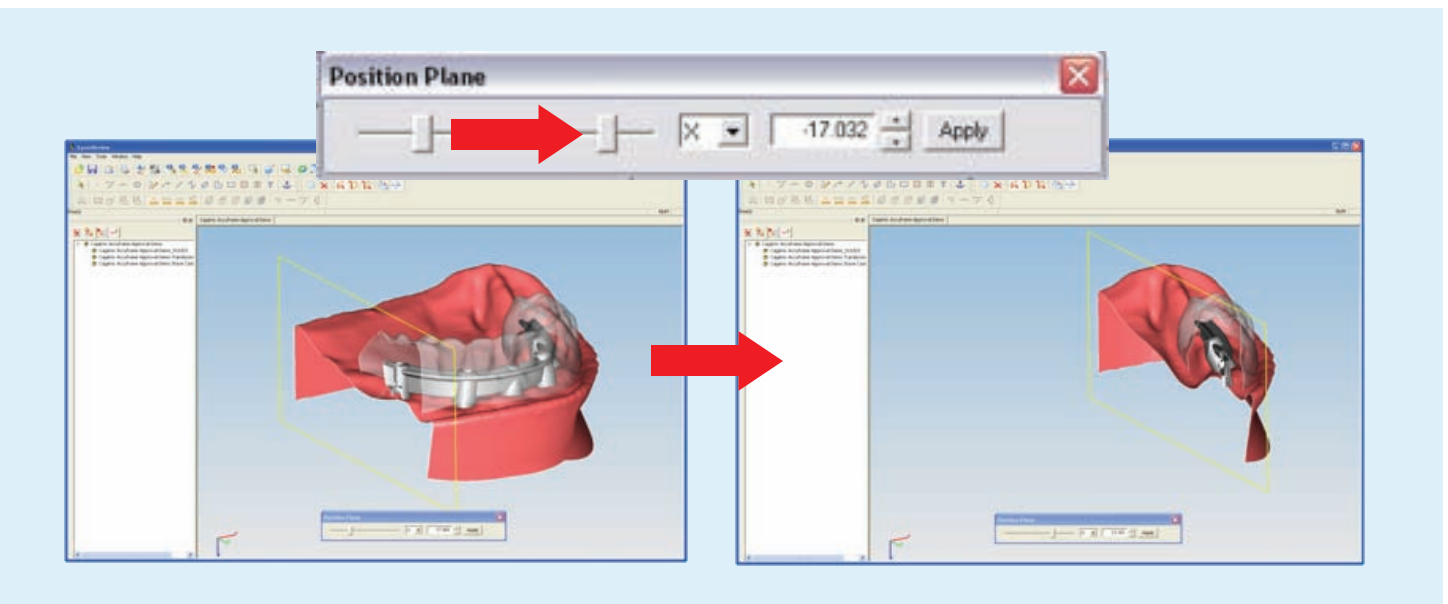
Step Four: Exploring The Toolbars

POSITION PLANE TOOLBAR (Continued)

Once the plane is created, using the clipping buttons shows different cross-section views. The picture below shows the view generated by the 'Clip Near' button.



Moving the drag bar in the 'Position Plane' toolbar left or right will change the position of the sectioning plane. The below images show the plane sweeping as the drag bar is moved.



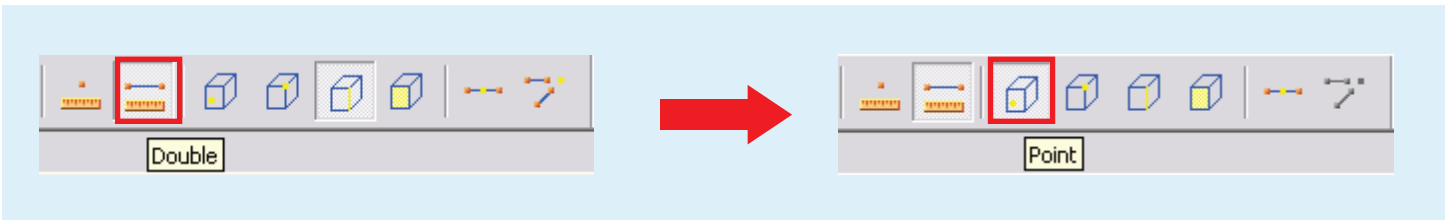
This is a basic outline of how sectioning works in XpresReview. You can align the plane along an axis other than one of the three principal axes by right-clicking on the plane and highlighting 'Align Plane' in the context menu. You can section only individual portions of an order by highlighting them before creating a section plane. You can even view multiple sections at once.

Using XPresReview Software

Step Four: Exploring The Toolbars

Take a Measurement of Two Points within a Cross Section Image

To take measurements in XpresReview is to click on the 'Double' and 'Point' buttons in the measurement toolbar



Once these two buttons have been pressed, all you have to do to get a measurement is click on any two points in the order. It is often best to take measurements in conjunction with cross-sections to ensure that you are measuring the area you are interested in. As in the image below, clicking on the white section lines will allow precise measurements between the frame and the soft tissue or tissue matrix. In the example below, the frame is 0.92mm from the stone cast and 3.65mm from the facial aspect of the diagnostic wax-up.

